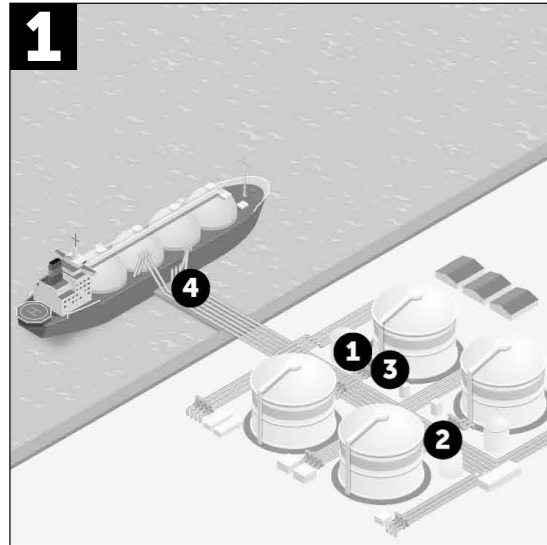
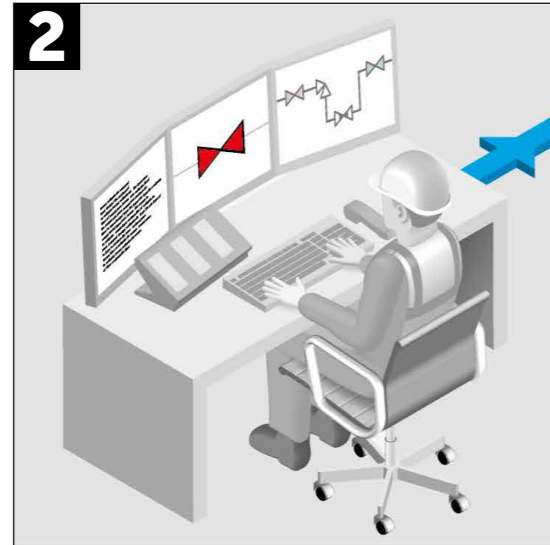


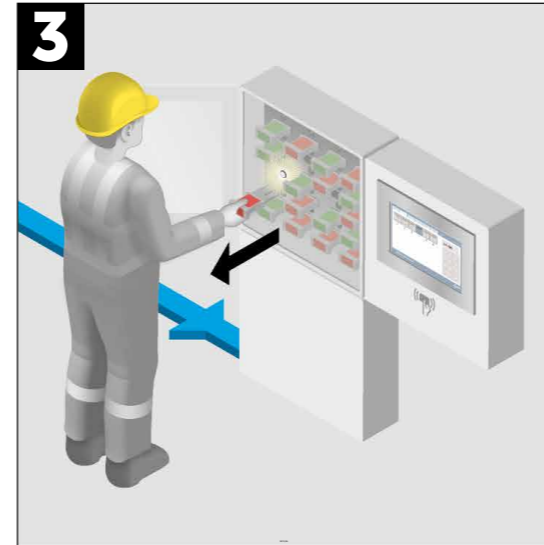
valve line-up system



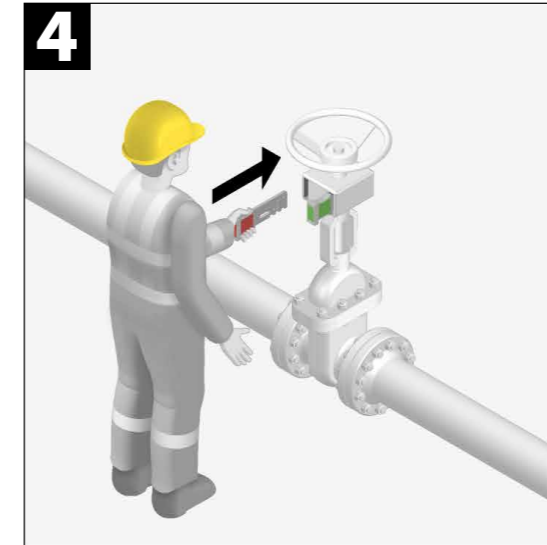
1 Ensure a correct valve line-up to avoid product contamination during loading operations.



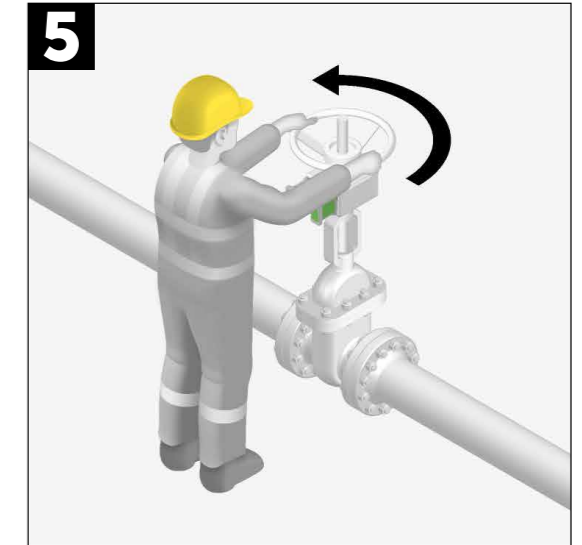
2 The DCS uses the planned loading schedule to determine the required valve line-up.



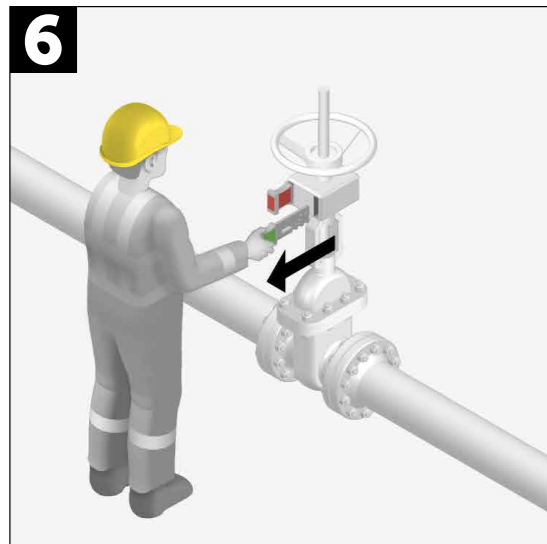
3 The DCS confirms the required valve operations to the Key Management System (KMS). The KMS releases the corresponding valve interlock keys.



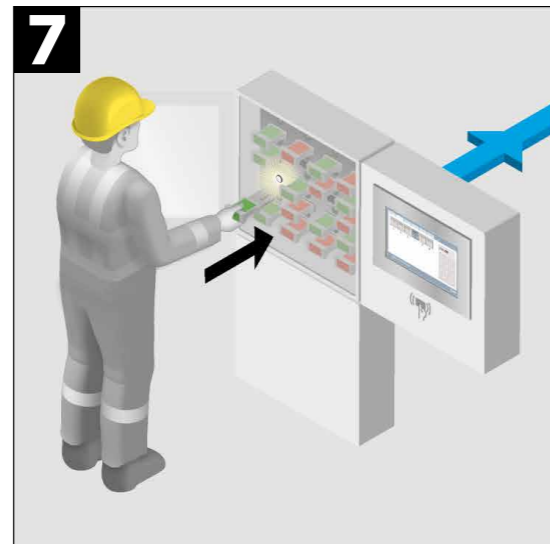
4 The operator uses the released keys to unlock only those valves specified by the DCS.



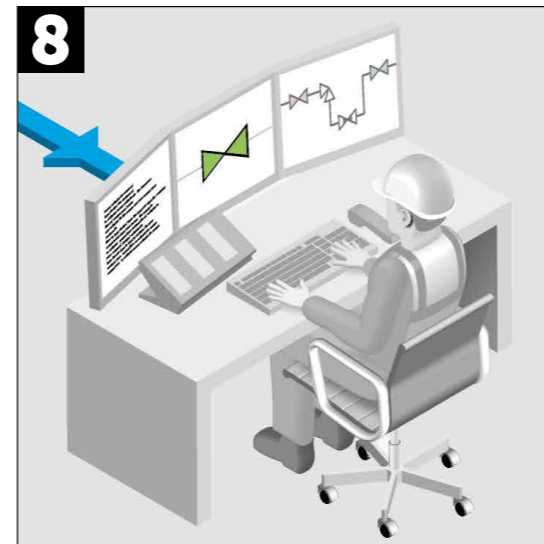
5 The valves are now unlocked and moved into their required state.



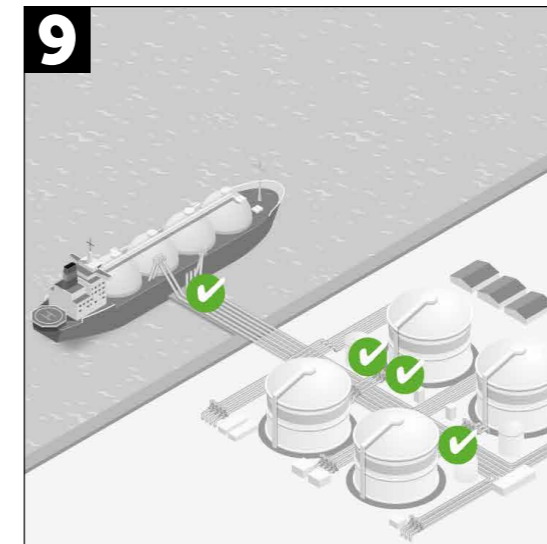
6 The locks trap the start keys and release the end keys after the valve is operated.



7 The KMS records the return of those keys and infers the changed valve states. It communicates these state changes to the DCS.



8 The DCS gets real time status insight in the manual valve line-up operation....



9 ...and initiates the loading process once all required valve states are confirmed.

Advantages

- You guarantee a correct valve line-up before loading, so you avoid product contamination;
- You ensure right-first-time operations and real-time valve status insight so you avoid operator time loss;
- You avoid the need for full plant automation, so you can save on investment costs.

For more information:
marketing@sofisglobal.com
www.sofisglobal.com